

# MIGRANT INTEGRATION POLICY INDEX III



*Where is the UK going on integration policy?*



# Tool to analyse, compare and improve integration policy

- Improve public knowledge, transparency & evidence on policies, changes, objectives, trends & international standards
- Do all residents have equal rights, responsibilities and opportunities to help improve integration?
- Equal treatment as 1<sup>st</sup> step in long path to integrated societies



# Largest and most rigorous study of its kind (148 policy indicators)

## 7 Policy Areas for immigrants to participate in society:

- 1) Labour market mobility\*
- 2) Family reunion\*
- 3) Education
- 4) Political participation\*
- 5) Long-term residence\*
- 6) Access to nationality
- 7) Anti-discrimination

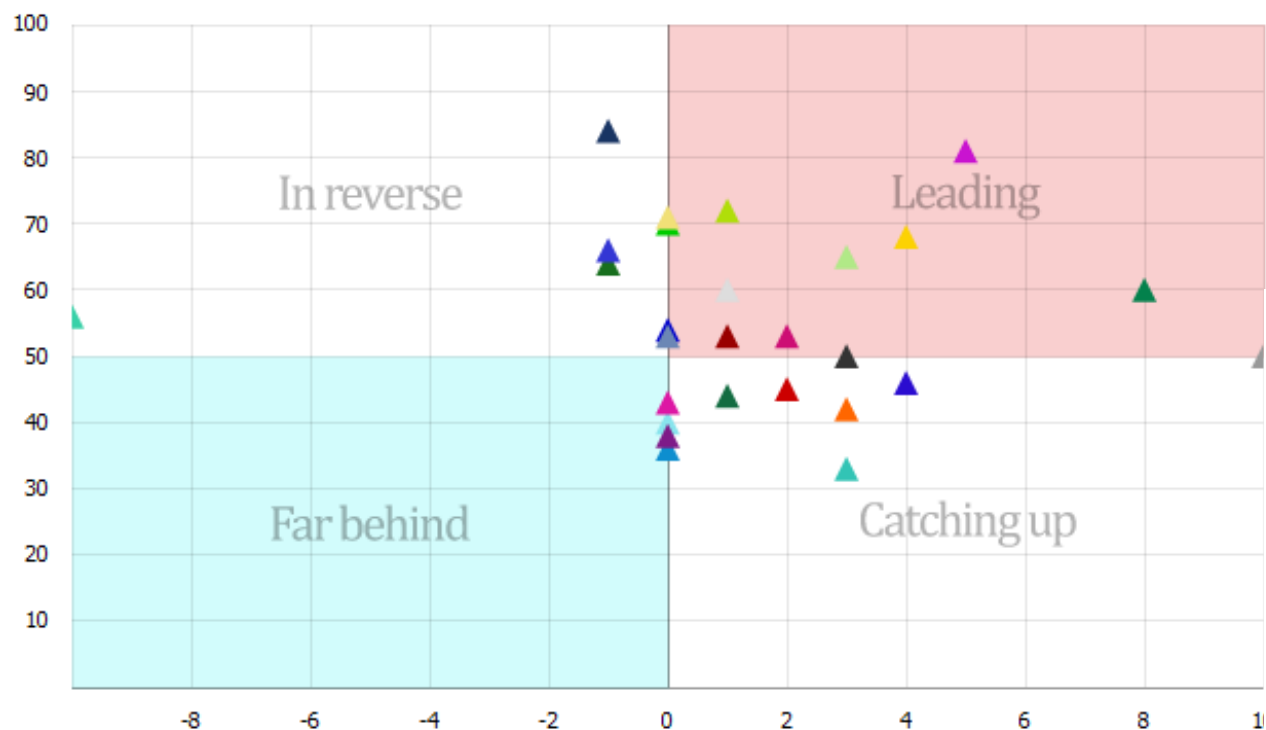
- Covers 27 EU Member States, Norway, Switzerland, Canada, USA (soon Australia, Japan...)
- 100+ national independent legal experts answer and peer review, all based on policies passed by 31 May 2010



## Points of divergence

- 1) Decision-makers disagree most about HOW to apply new conditions to immigrants
- 2) Countries increasingly impose tests, but do they want to support immigrants to succeed?
- 3) When immigrants are made less secure in their legal status, does society become any more secure?

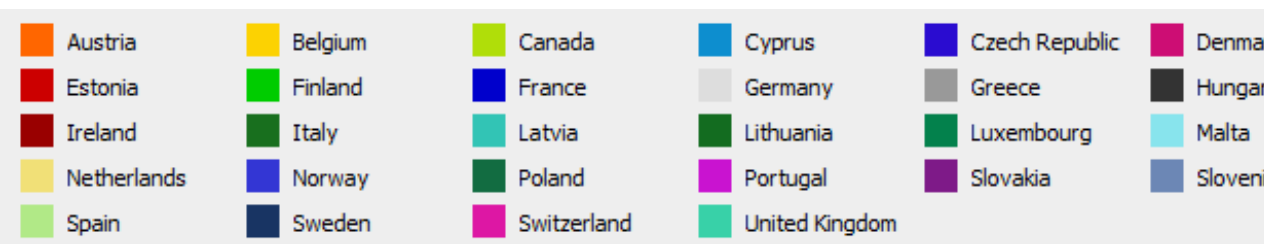




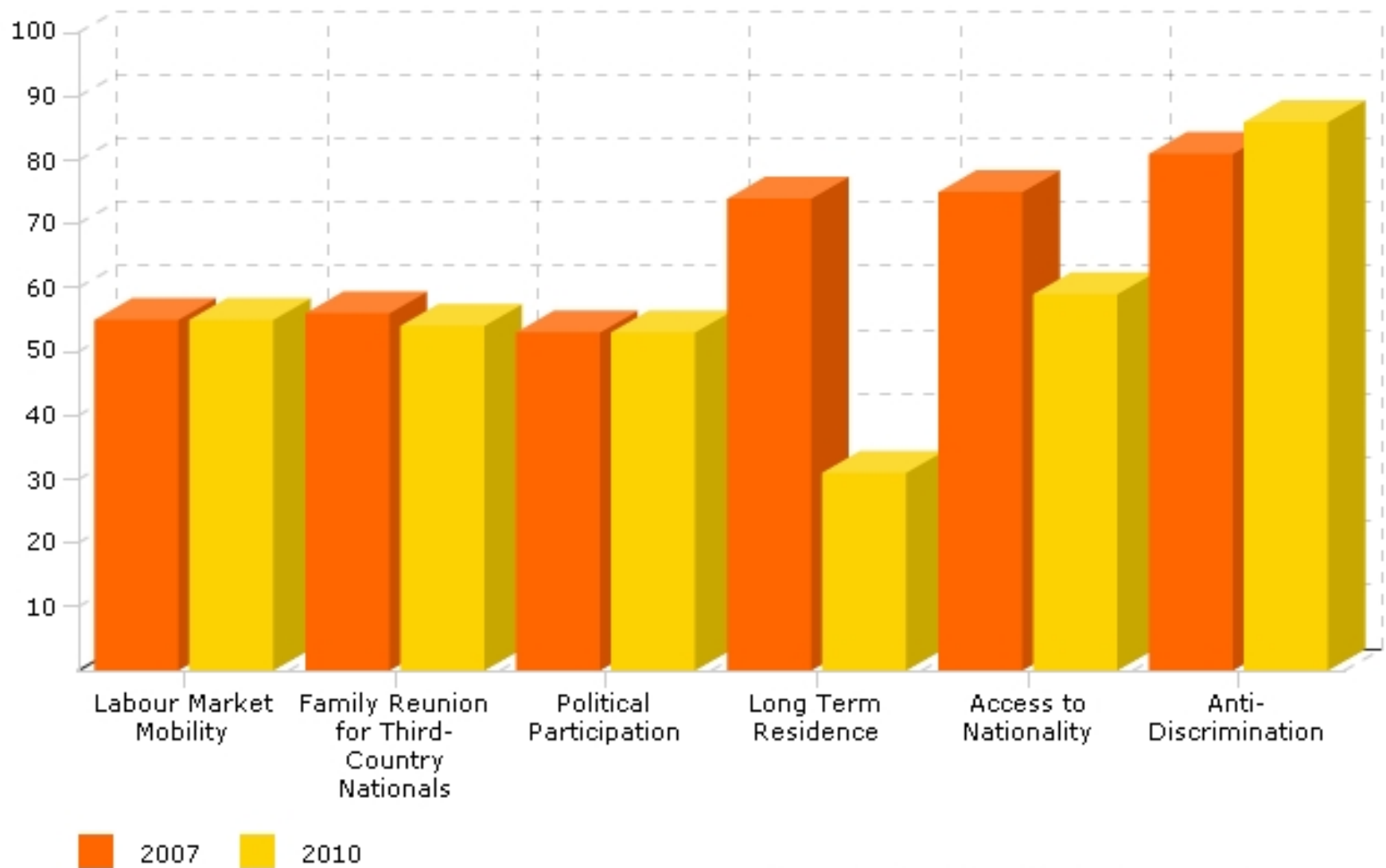
Few government changes based on facts

Monitor statistics, but evaluate policy impact?

Increasingly, elections and public perceptions



## MIPEX Results: United Kingdom



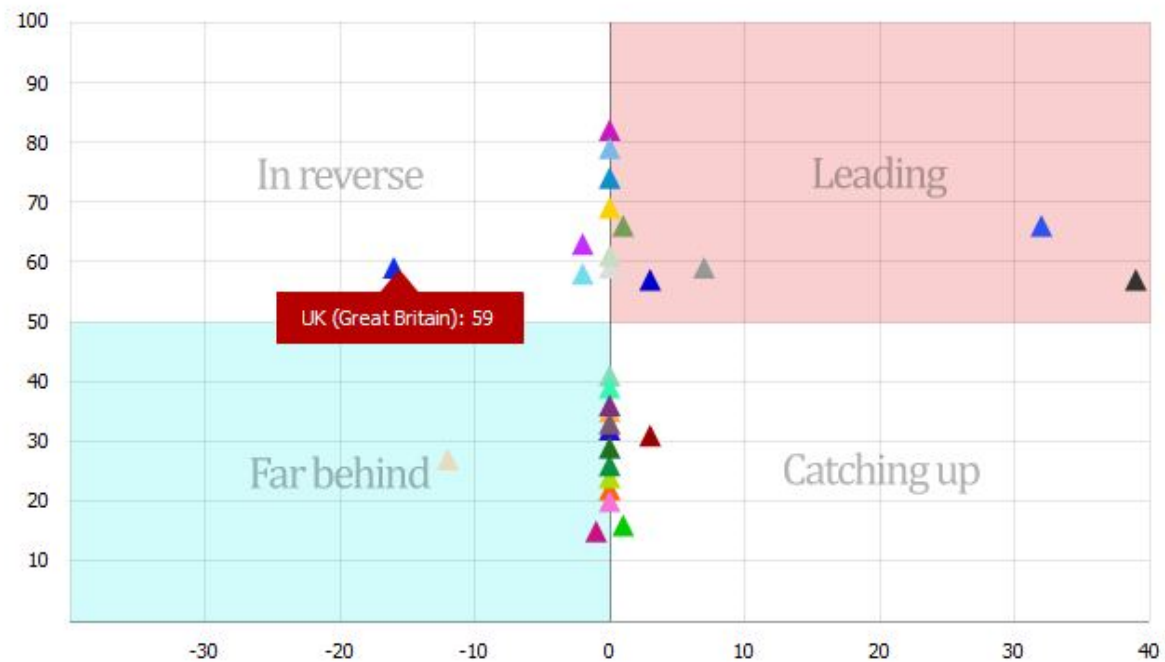
MIPEX Results: Long Term Residence (2007 - 2010)

Show legend



MIPEX Results: Access To Nationality (2007 - 2010)

Show legend



**MIPEX Results: Conditions for acquisition of status - 2010**

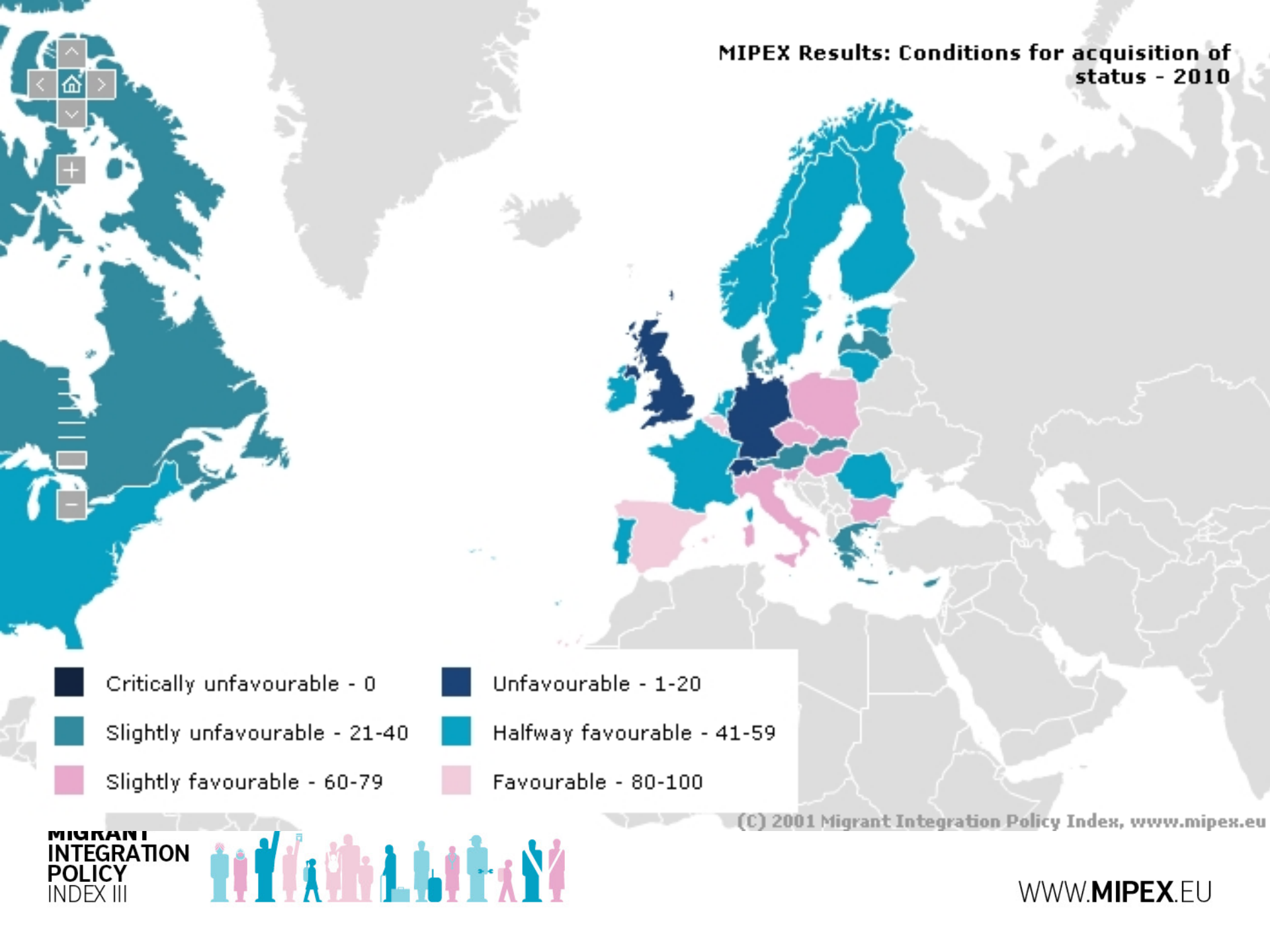
**Legend:**

- Critically unfavourable - 0
- Unfavourable - 1-20
- Slightly unfavourable - 21-40
- Halfway favourable - 41-59
- Slightly favourable - 60-79
- Favourable - 80-100

**MIGRANT INTEGRATION POLICY INDEX III**

**WWW.MIPEX.EU**

(C) 2001 Migrant Integration Policy Index, [www.mipex.eu](http://www.mipex.eu)



**MIPEX Results: Conditions for acquisition of status - 2010**

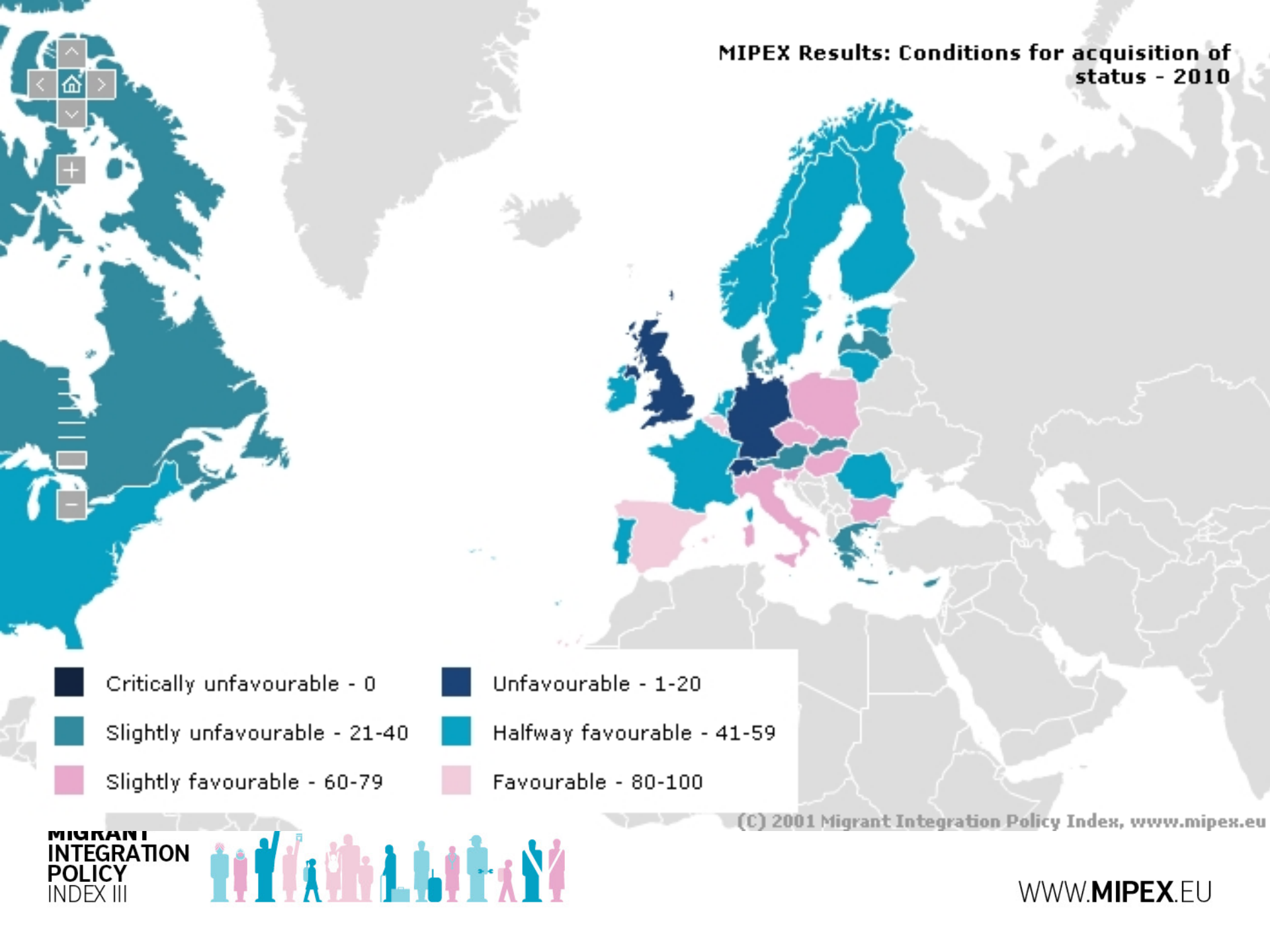
**MIGRANT INTEGRATION POLICY INDEX III**

**WWW.MIPEX.EU**

**Legend:**

- Critically unfavourable - 0
- Unfavourable - 1-20
- Slightly unfavourable - 21-40
- Halfway favourable - 41-59
- Slightly favourable - 60-79
- Favourable - 80-100

(C) 2001 Migrant Integration Policy Index, [www.mipex.eu](http://www.mipex.eu)



**MIPEX Results: Conditions for acquisition of status - 2010**

Legend:

- Critically unfavourable - 0
- Unfavourable - 1-20
- Slightly unfavourable - 21-40
- Halfway favourable - 41-59
- Slightly favourable - 60-79
- Favourable - 80-100

**MIGRANT INTEGRATION POLICY INDEX III**

(C) 2001 Migrant Integration Policy Index, [www.mipex.eu](http://www.mipex.eu)

[WWW.MIPEX.EU](http://WWW.MIPEX.EU)

**MIPEX Results: Conditions for acquisition of status - 2010**

Legend:

- Critically unfavourable - 0
- Unfavourable - 1-20
- Slightly unfavourable - 21-40
- Halfway favourable - 41-59
- Slightly favourable - 60-79
- Favourable - 80-100

**MIGRANT INTEGRATION POLICY INDEX III**

(C) 2001 Migrant Integration Policy Index, [www.mipex.eu](http://www.mipex.eu)

[WWW.MIPEX.EU](http://WWW.MIPEX.EU)

# “Earned” Citizenship

## MIPEX prospective impact assessment of path to citizenship

### Runnymede Trust

RUNNYMEDE



“The UK’s score on access to nationality would drop as much as 15 points, falling from its position as the 5th most favourable for promoting integration to 10th, just around the EU average. This drop comes from a slight change in the waiting periods for naturalisation and a dramatic one in the conditions. The type of rules a country will adopt to regulate entry and citizenship will depend to a considerable degree on the country’s experience and expectations but also on its vision for the society it is seeking to build... [READ MORE.](#)”

[Home](#) > [PRESS](#) > [MIPEX assessment finds points-based citizenship would be most onerous and complicated system in Europe](#)

## MIPEX assessment finds points-based citizenship would be most onerous and complicated system in Europe

### Runnymede Trust

RUNNYMEDE

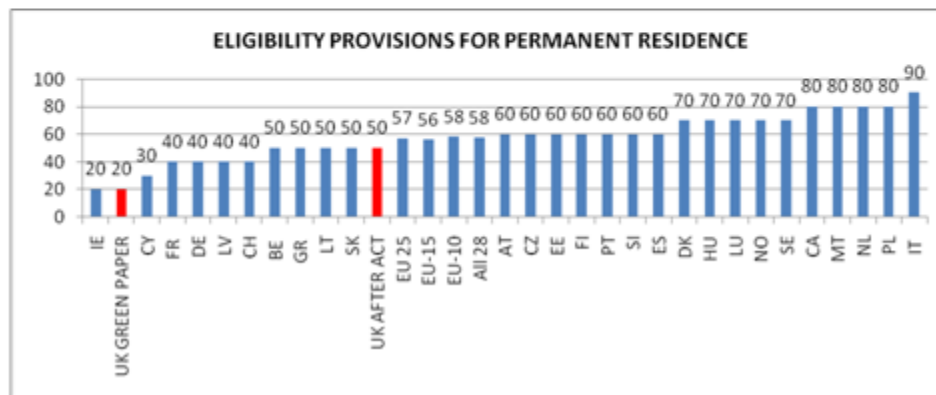
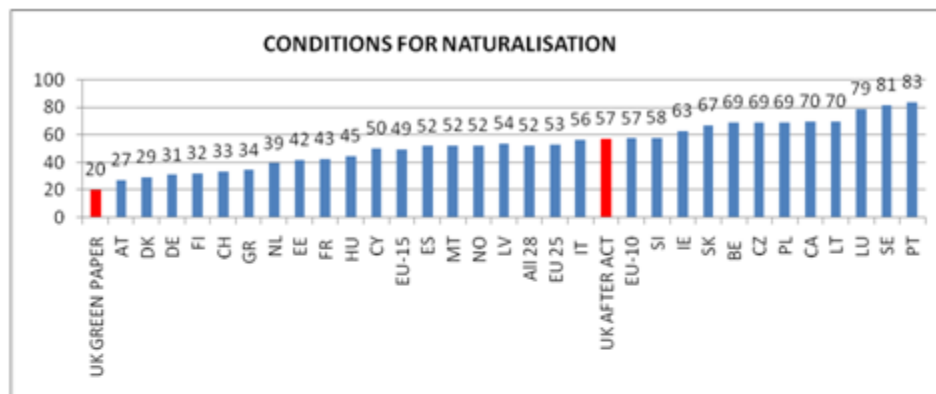


In a response to the Green Paper *Earning the Right to Stay – A New Points Based Test for Citizenship*, the Runnymede Trust provides concrete evidence that the Government’s proposals will have a negative effect on integration and cohesion. A commissioned assessment by the Migrant Integration Policy Index (MIPEX) reveals that the proposals would make language and integration conditions for British citizenship one of the most onerous and complicated in Europe. In a recent BBC interview, Home Office minister Phil Woolas reverted to international



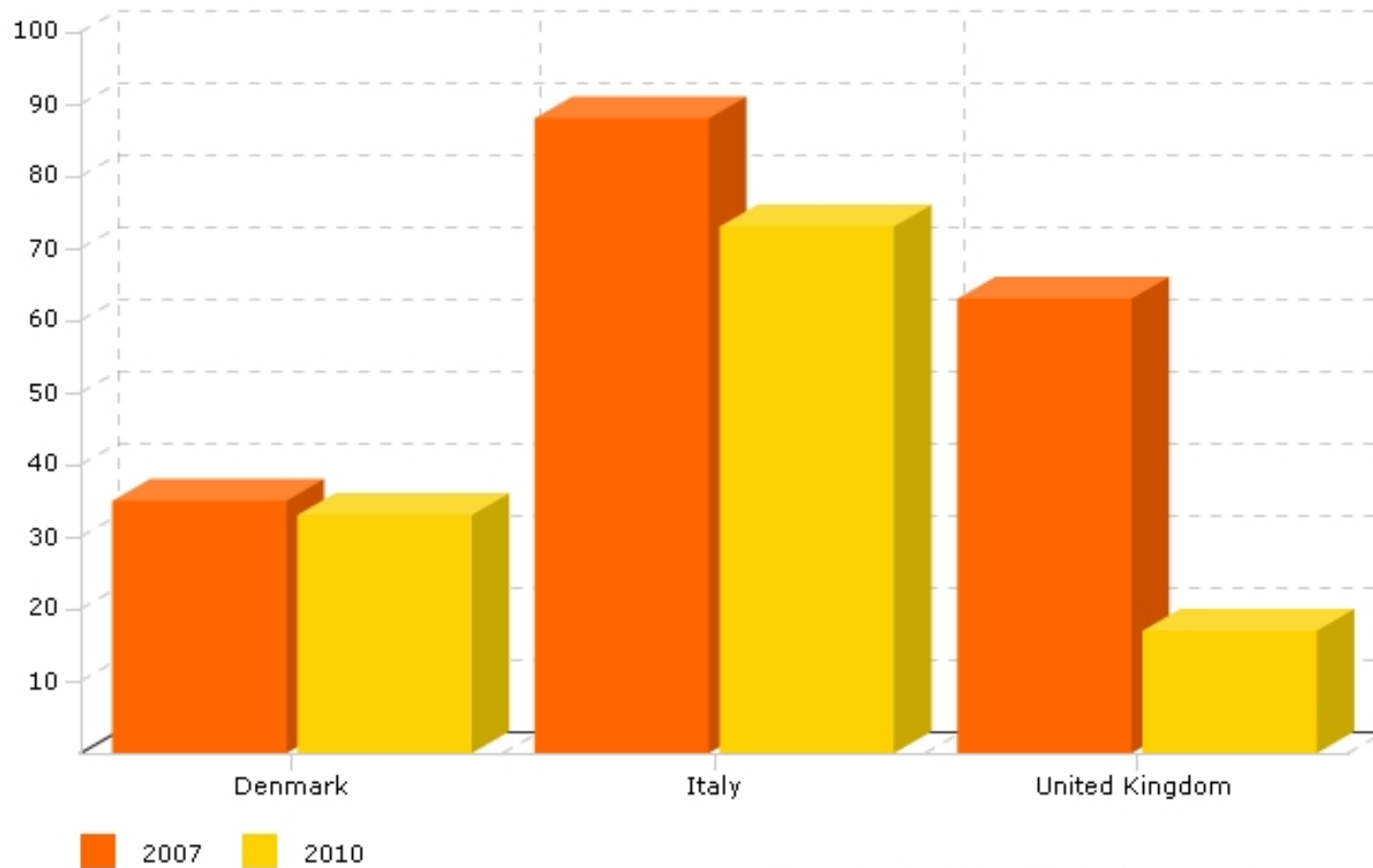
*Phil Woolas, former UK Immigration Minister, on moving from new Citizenship Act to points-system: “This is what America does, it is what France does, it’s what other countries do and we think we should do the same.”*

LANGUAGE AND INTEGRATION CONDITIONS	FOR PERMANENT RESIDENCE	FOR NATURALISATION
CANADA	64	57
FRANCE	44	42
GERMANY	22	17
GREECE	22	25
NETHERLANDS	13	14
SWITZERLAND	30	17
UK AFTER ACT	56	57
UK GREEN PAPER	11	8

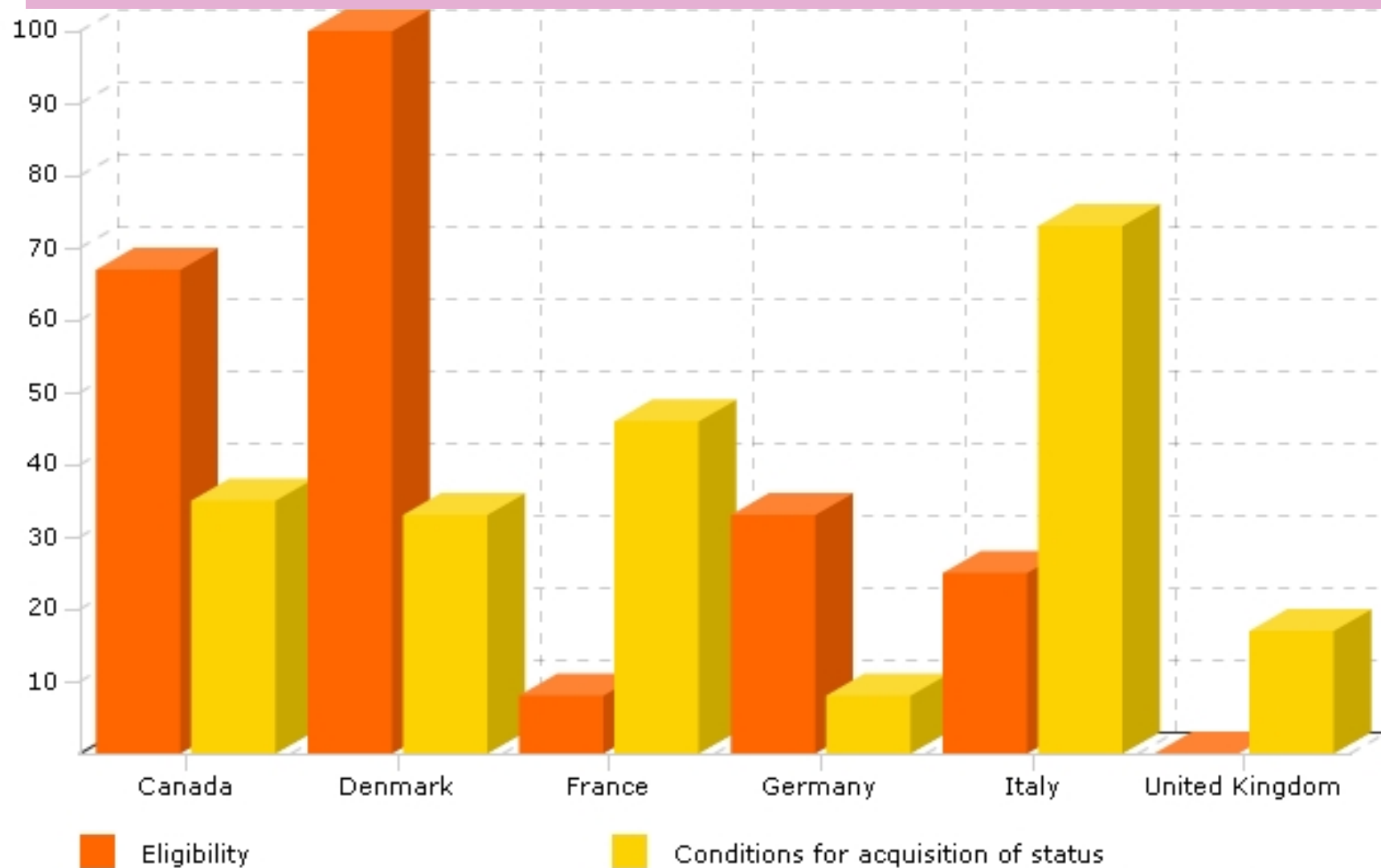


# Learning “from” UK: Points-based residence

MIPEX Results: Conditions for acquisition of status

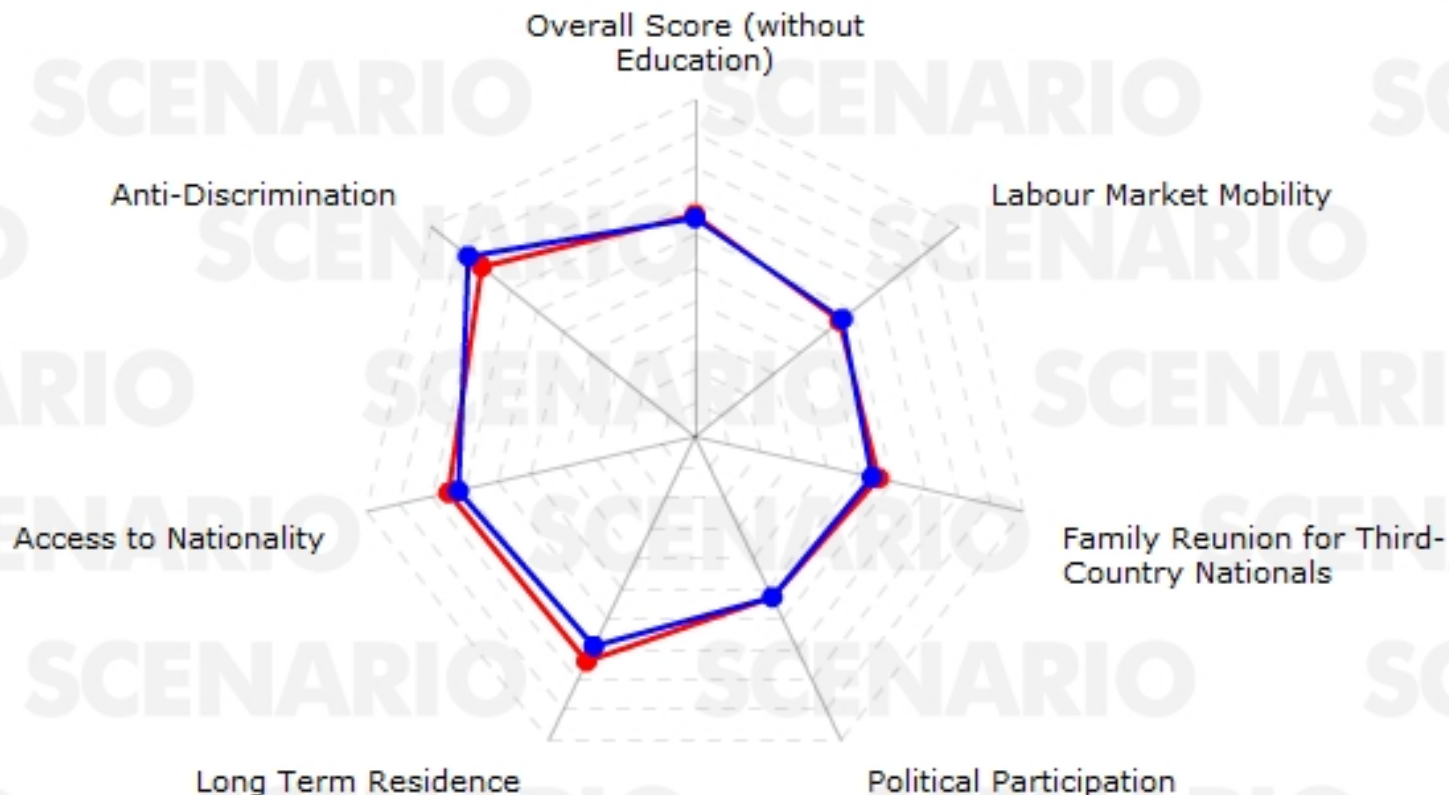


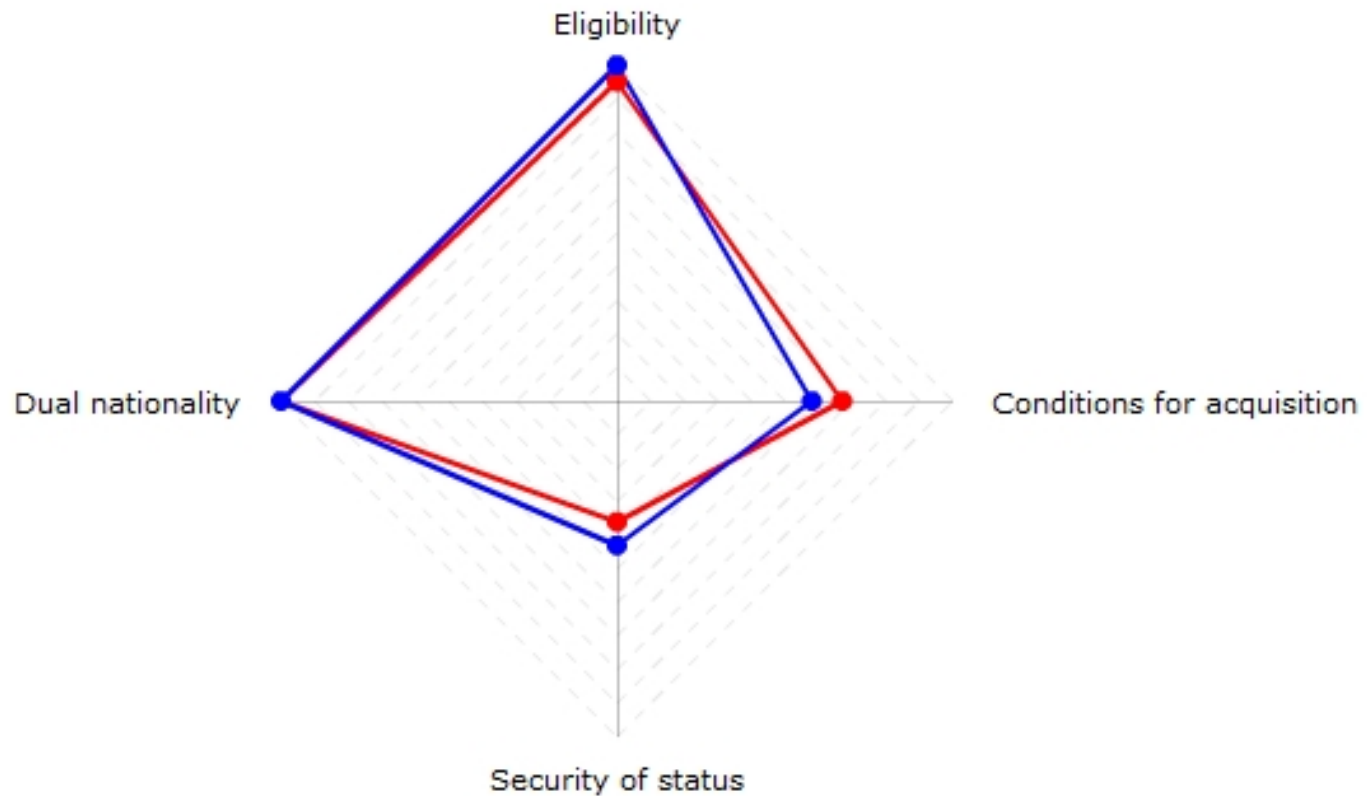
## Who "Earns" citizenship/residence?



# After Earned Citizenship Citizenship and residence back to normal strength for integration

## MIPEX Results: United Kingdom





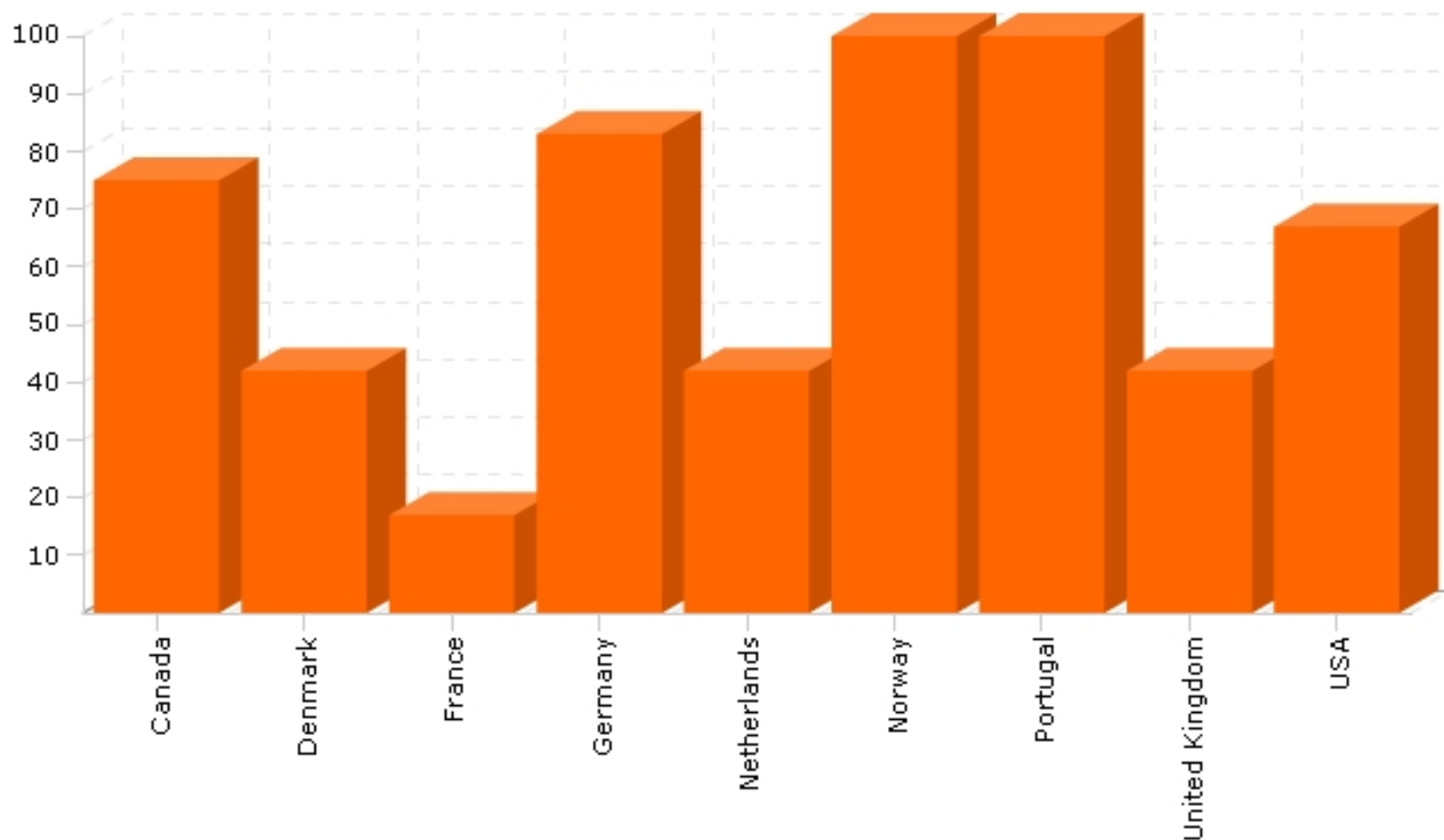
Canada

United Kingdom

Copyright 2011 Migrant Integration Policy Index, [www.mipex.eu](http://www.mipex.eu)



# MIPEX Results: 2010

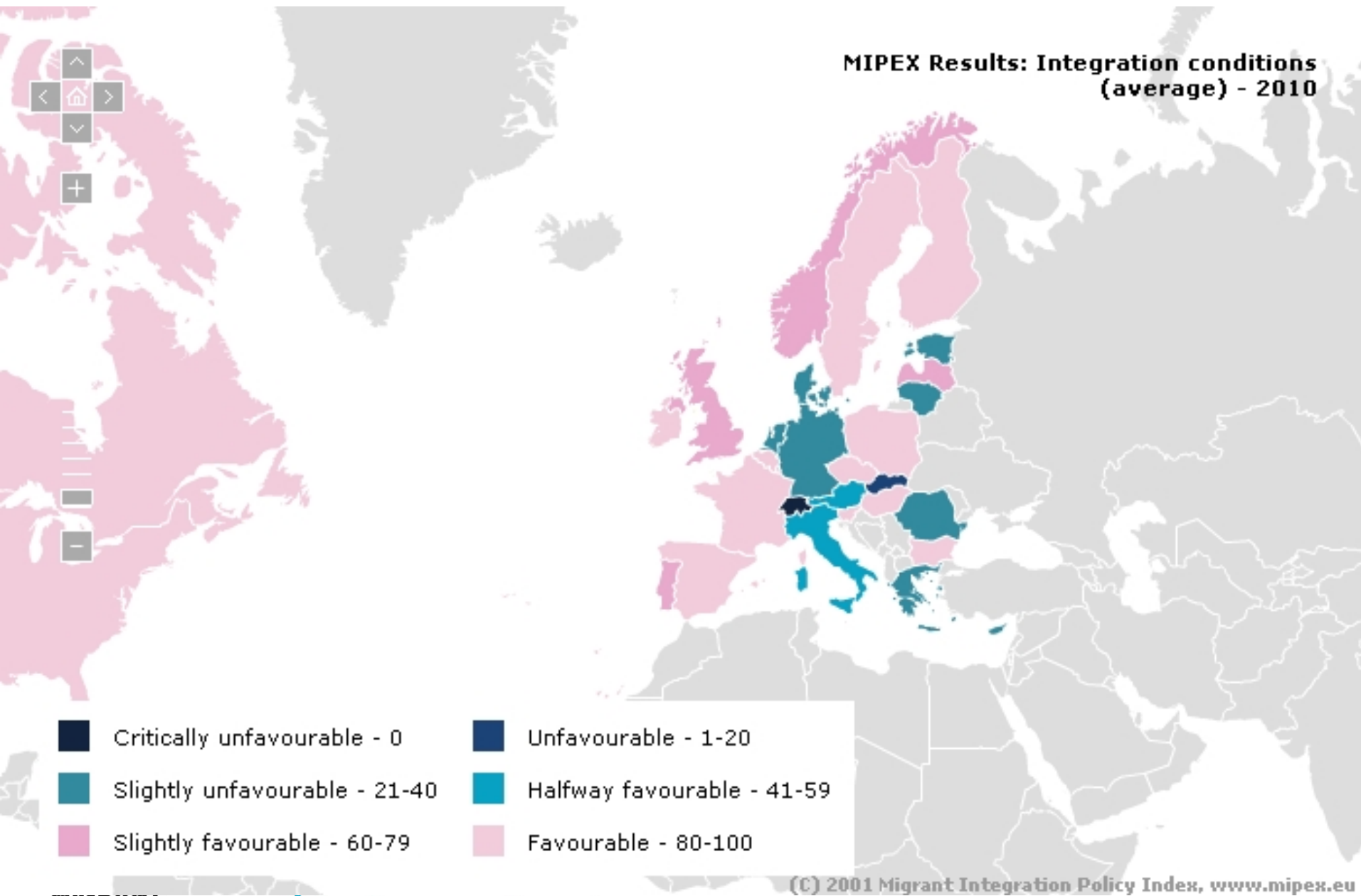


■ Citizenship / integration requirements and exemptions (average)

Copyright 2011 Migrant Integration Policy Index, [www.mipex.eu](http://www.mipex.eu)



# MIPEX Results: Integration conditions (average) - 2010

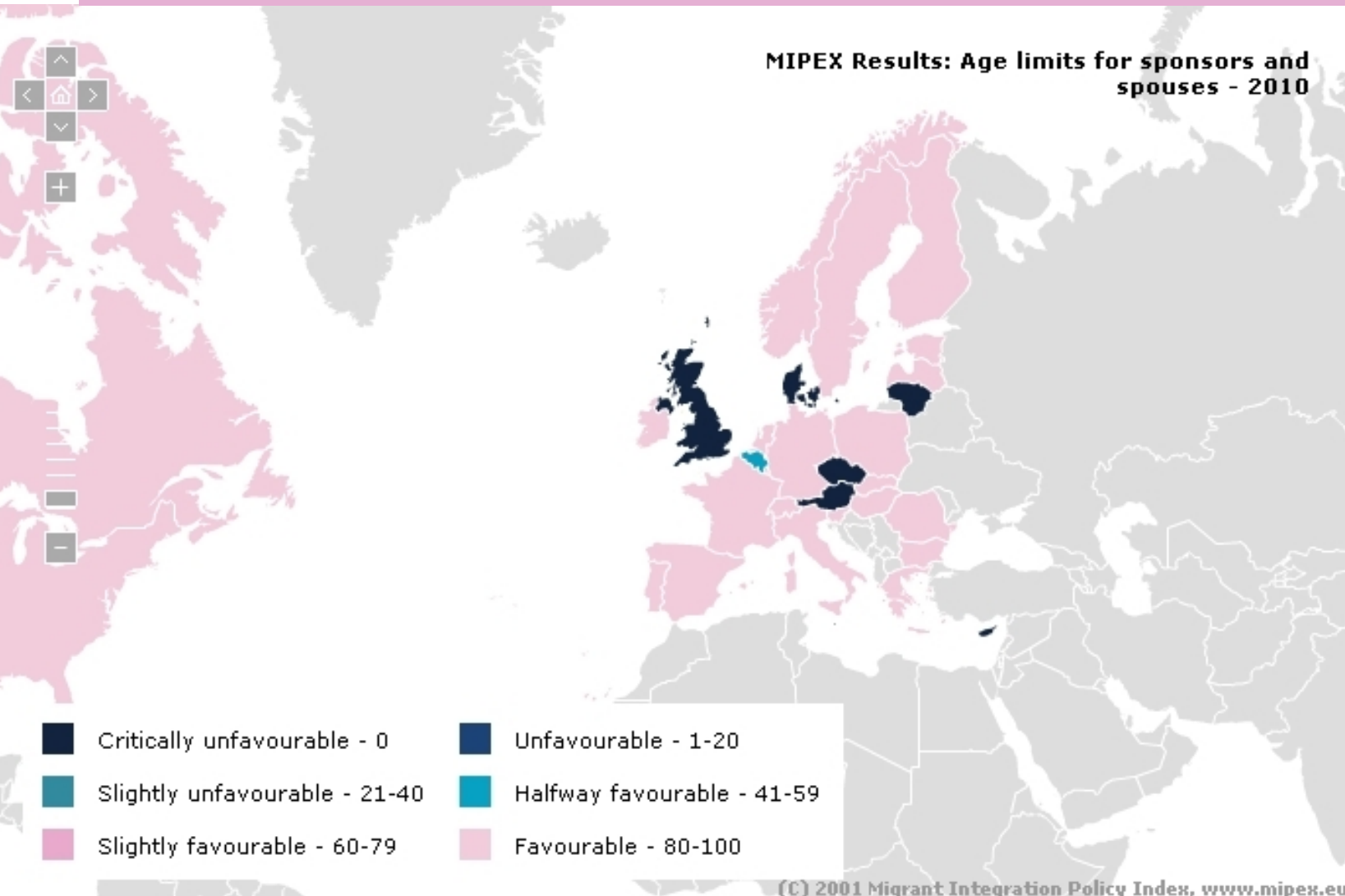


## Family reunion

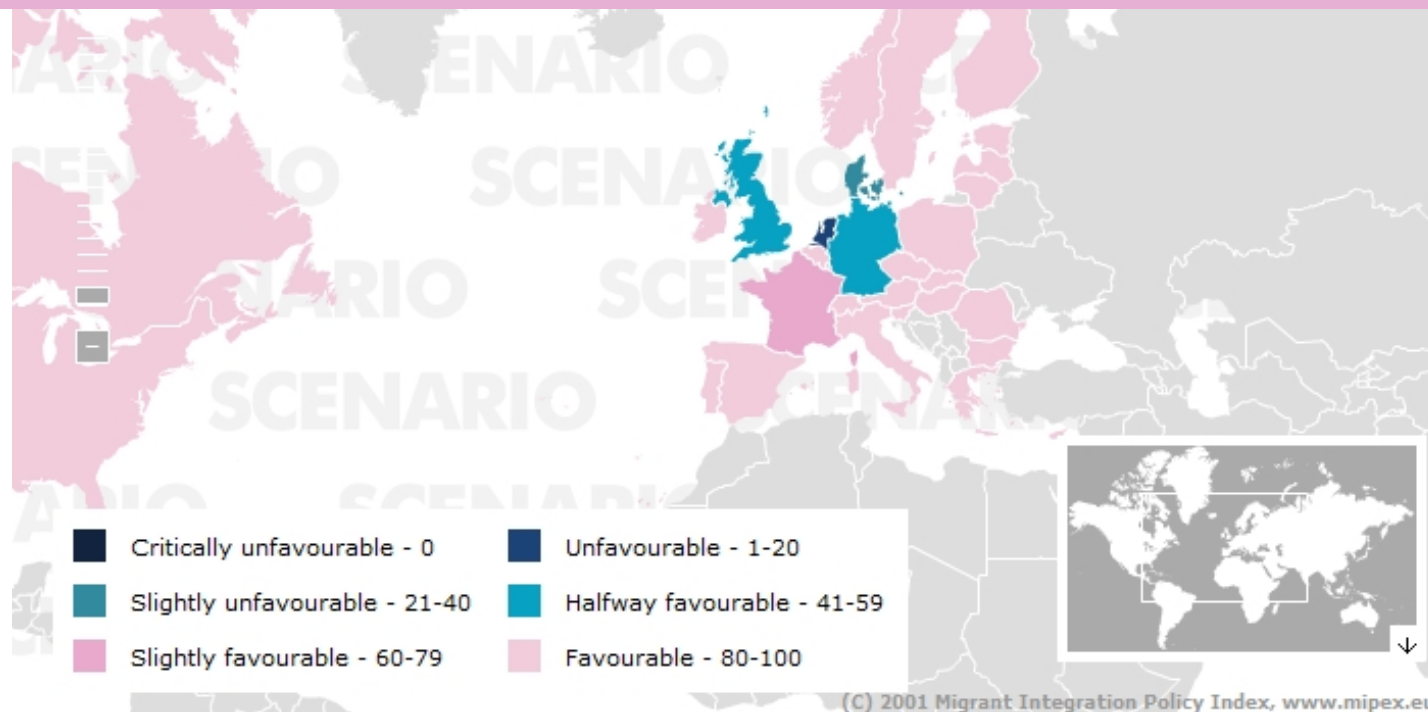
*David Cameron, current UK Prime Minister: “But as well as abuse of the system, there are other problems with the family route. We know, for instance, that some marriages take place when the spouse is very young, and has little or no grasp of English...That’s why last November we introduced a requirement for all those applying for a marriage visa to demonstrate a minimum standard of English...and we will defend the age of limit of 21 for spouses coming to the UK.”*



# Is the minimum age for couples the same as for marriage?



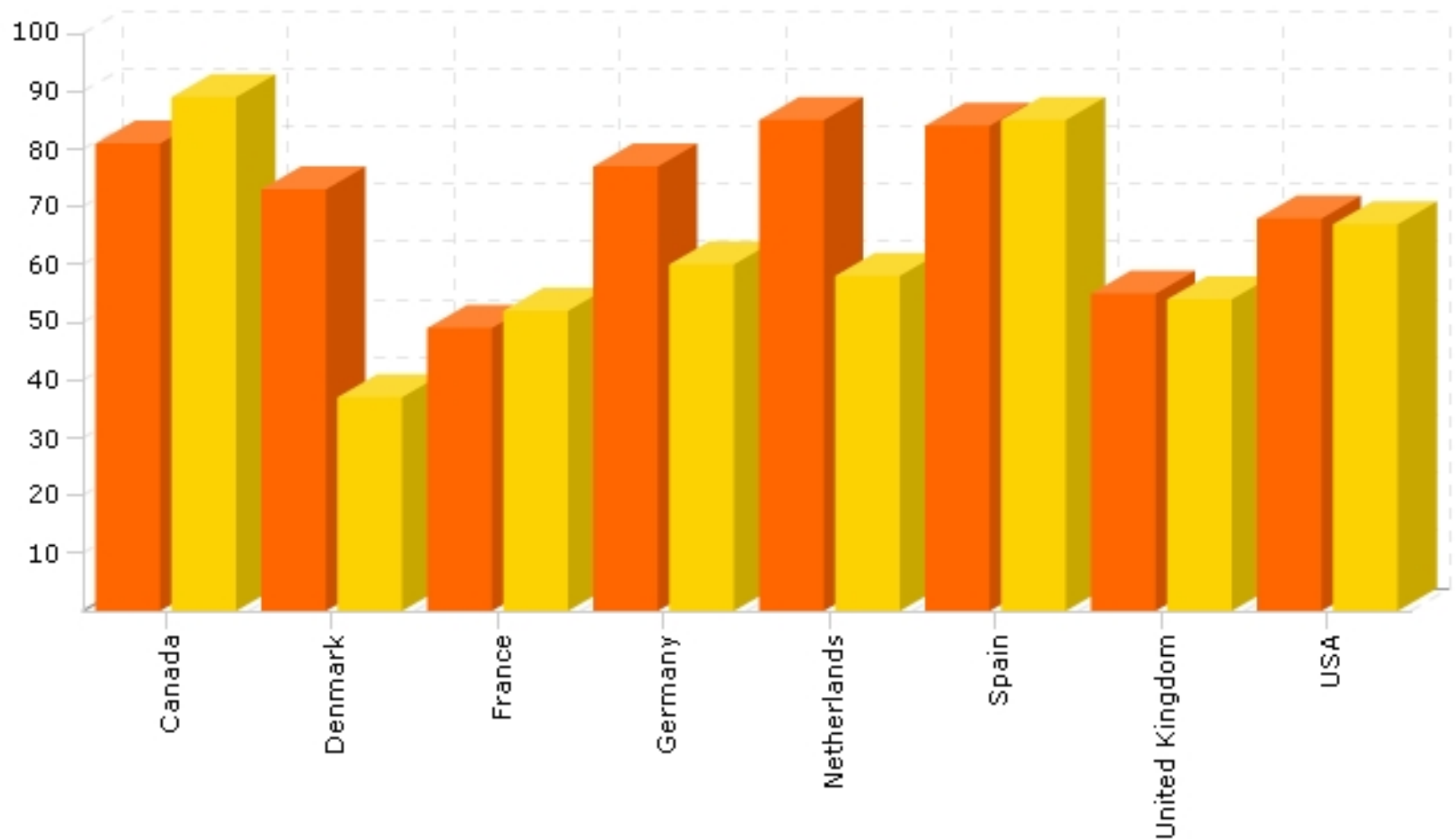
# Do spouses need to already know the language before they reunite?



Rare in EU, absent in traditional immigration countries. FR only requires free, accessible courses. UK less favourable because no exemptions for illiterate or those unable to afford or access test/course. Not likely to 'cap' migration, but only delay contact with society & language.



## MIPEX Results: 2010



Labour Market Mobility

Family Reunion for Third-Country Nationals

Copyright 2011 Migrant Integration Policy Index, [www.mipex.eu](http://www.mipex.eu)



# MIGRANT INTEGRATION POLICY INDEX III

MIPEX III

[WWW.MIPEX.EU](http://WWW.MIPEX.EU)

