

HATE
HOPE
HATE

rosie@hopenothate.org.uk

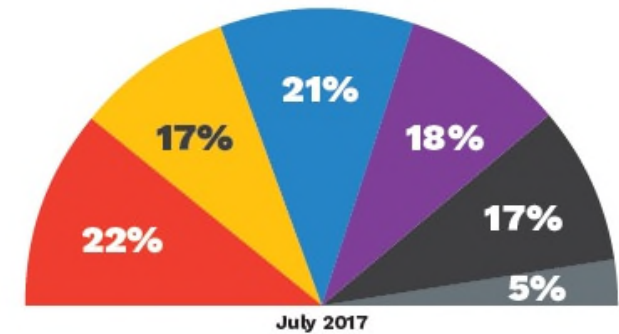
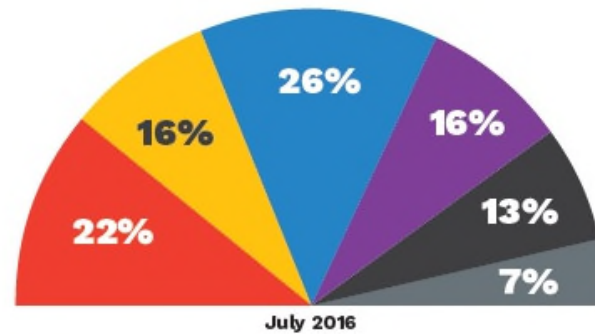
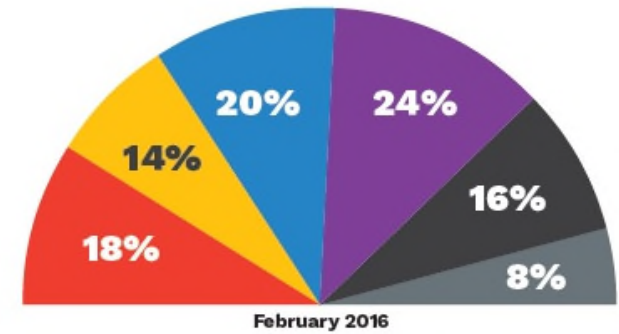
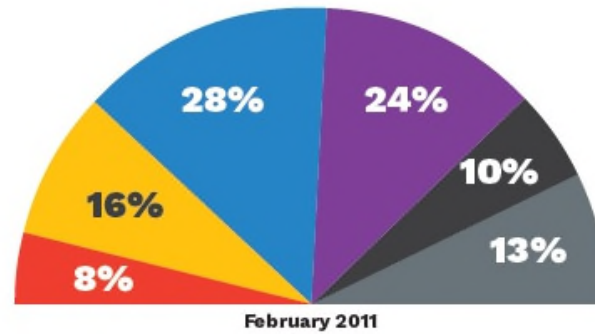


FEAR AND HOPE 2017
 RACE, FAITH AND BELONGING IN TODAY'S ENGLAND

Rosie Carter and Nick Lowles

The 'tribes' as a percentage of the population

■ Confident multiculturals
 ■ Mainstream liberals
 ■ Immigrant ambivalence
■ Culturally concerned
 ■ Latent hostiles
 ■ Active enmity



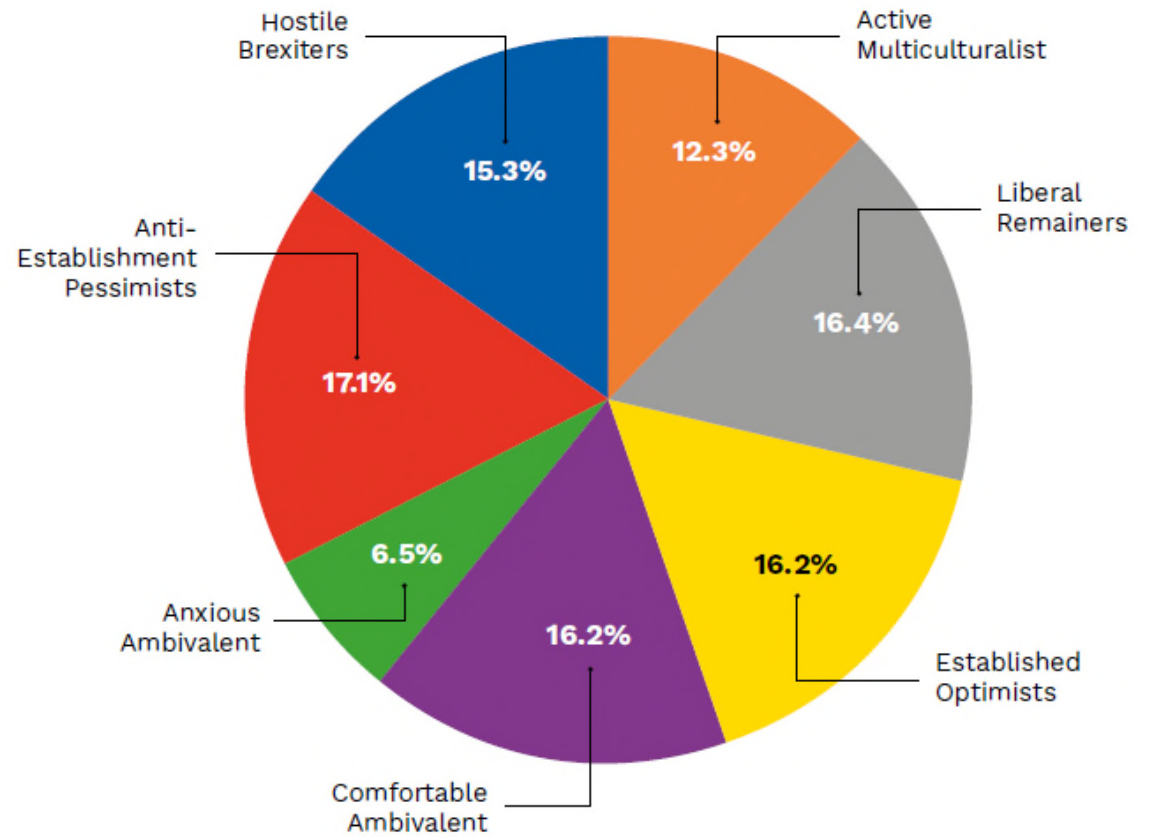
FEAR & HOPE 2019

HOW BREXIT IS CHANGING WHO WE ARE



Rosie Carter and Nick Lowles

The tribes as a percentage of the population

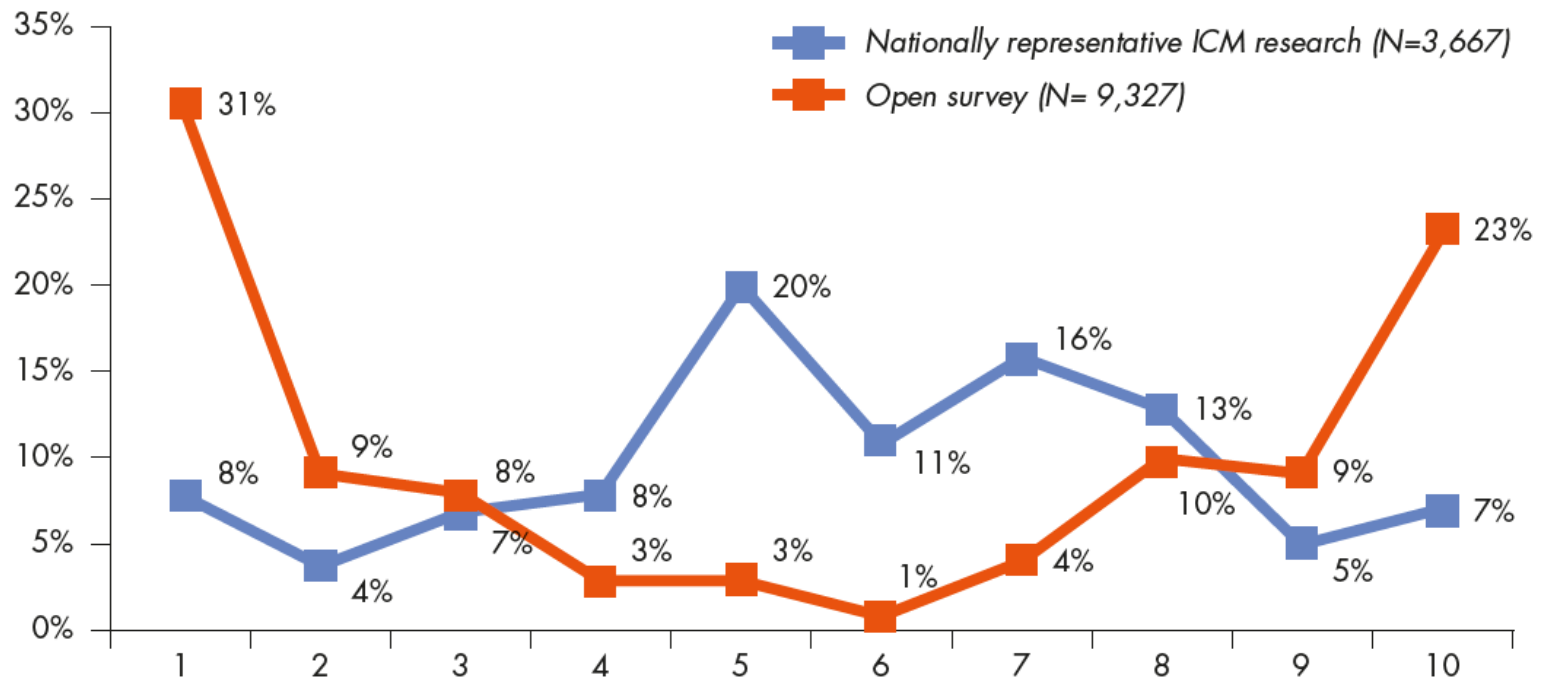


The National Conversation on Immigration

- Open online survey
- Nationally representative polling
- 60 visits to towns and cities across the UK, chosen to give a mix of geography, migration history, politics
- In each place we held a stakeholder meeting followed by a guided conversation with a citizens' panel.



Figure 1: On a scale of 1-10, do you feel that immigration had a positive or negative impact on the UK, including your local community?





“They’re [migrants are] just coming in and taking our resources. I’ve got to wait until I’m 67 instead of retiring at 60 now to get my pension... so where is my, after working all my life, my little bit of life?”

**National Conversation Participant,
Grimsby**

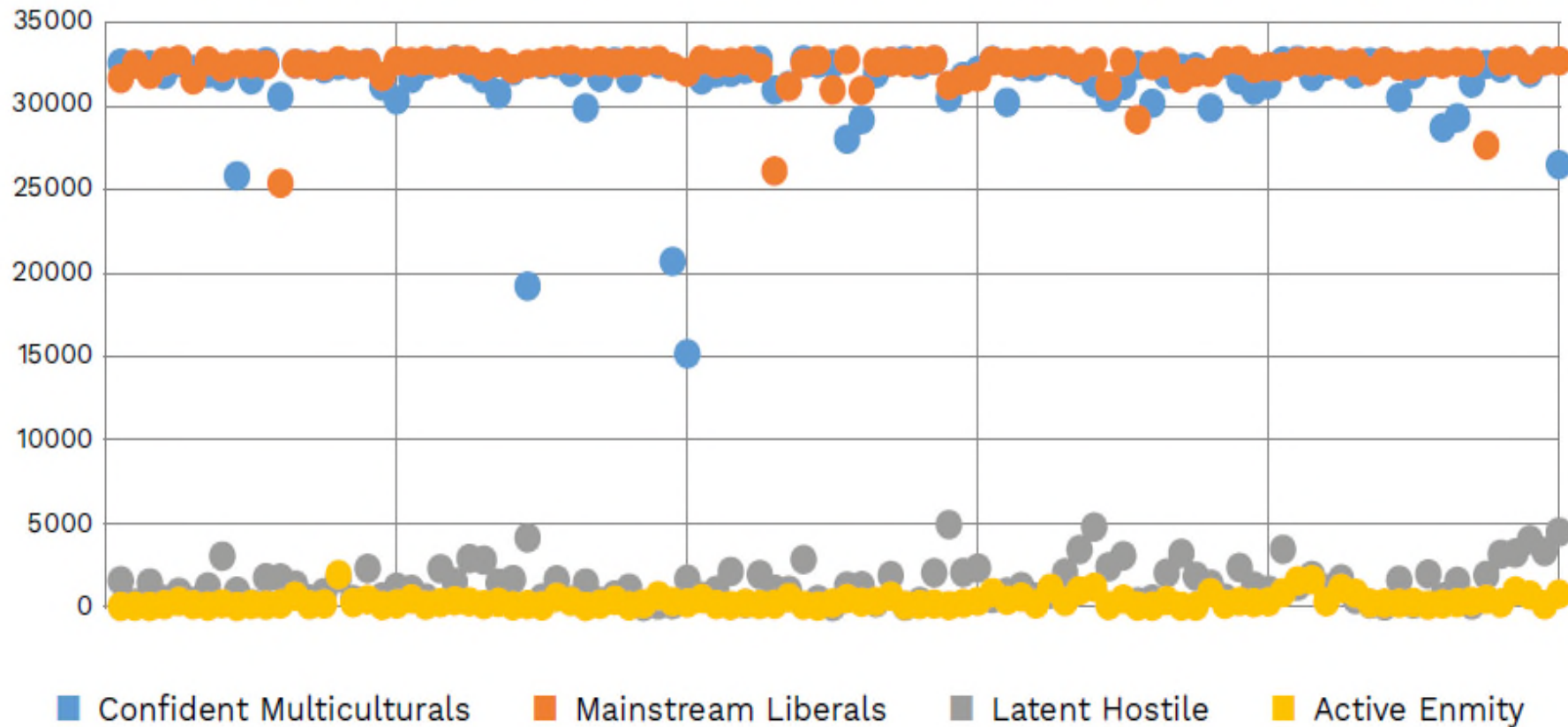
“I think they just have a different way of living. Where I live there’s a lot of people who stand on street corners and throw cigarette butts down.... I just don’t want to see their rubbish.... Can we all take responsibility.... Actually, if we all kept our bit of the road clean it would make for a better living environment it don’t matter what nationality you’re from, but some people will not conform, they will not do it because it’s just not in them it’s not in their culture”

**Citizens’ panel participant,
Northampton**



Figure 14: 100 best fit: Adult skill (index of multiple deprivation 2015)

index of multiple deprivation adult skills rank: 1 (most deprived area) to 32,844 (least deprived area)





- Dialogue and Engagement
- Complicating the narrative: Messaging to include and shift the middle ground
- How can we expand to address the drivers? How to really make inclusion about everyone?
- Contact theory: it works when it works
It's not just about bringing people together in a room, it's how that room works.
- Addressing root causes: inclusion is about more than migrants

HATE
HOPE
HATE

rosie@hopenothate.org.uk